

# PETROL HP WASHER

Intensive series- Ref. : TIE 30 120 HE



**Reduction gear**  
1450 rpm



## MAIN FEATURES

- ▶ Pump + reduction gear : longer lifetime
- ▶ Anti water hammer regulator
- ▶ Solid frame



PETROL



Reduction gear



Warranty  
**3 years**  
MOTOR



WARRANTY  
**2**  
YEARS

## ● SPECIFICATIONS

- Crankshaft pump (radial) 3 ceramic pistons
- Regulator : separated from the manifold with pressure drop to zero
- Reduction gear : reduces the pump rotation speed
- Petrol engine with lack of oil safety
- Pull start
- Frame and hood : welded steel, epoxy paint

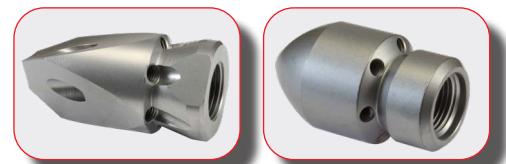


## OPTIONS

- ▶ 1 - Sanding kit
- ▶ 2 - Hydro-ejector kit

## ● STANDARD EQUIPMENT

- Hose reel : made of steel on reinforced hood
- Hose : 30 m 3/8 hose
- HP spray gun : with swivel link (on hose side)
- Double lance : adjustable high & low pressure
- Milled clearing nozzle : stainless steel, Ø 50 mm, 4 jets forward and 6 jets backwards
- Pipe cleaning nozzle : Ø 30 mm, 6 jets backwards
- Pneumatic wheels : Ø 500 mm
- Wheelbarrow arms



Use :



Semi-pro Professional Intensive Super Intensive

## ● MODEL

| REFERENCE     | FLOW RATE |      | PRESSURE<br>bar | POWER  |    |      | PUMP      |       | WEIGHT<br>kg |
|---------------|-----------|------|-----------------|--------|----|------|-----------|-------|--------------|
|               | l/min     | l/h  |                 | Engine | HP | rpm  | Brand     | Oil   |              |
| TIE 30 120 HE | 30        | 1800 | 120             | HONDA  | 13 | 1450 | BERTOLINI | 15W40 | 130          |

